

Safety Switch General Information

Global Specifications	
SystemVoltage	240 VAC
SwitchType	Single Throw - GeneralDuty
Poles/Blades	2-Pole
Amperage	30
Protection	Fusible withNeutral
EnclosureType	NEMA1
SpecialPaint	Red
FuseClips	Standard
SwitchLugs	Standard
FungusProofTreatment	N
Lock-OnProvision	Y
FusePullers	N
ControlPole	N
GroundLugs	Y
StainlessMechanism	N
MillDuty	N

Cover Controls

QUANTITY	DESCRIPTION
----------	-------------

Nameplate

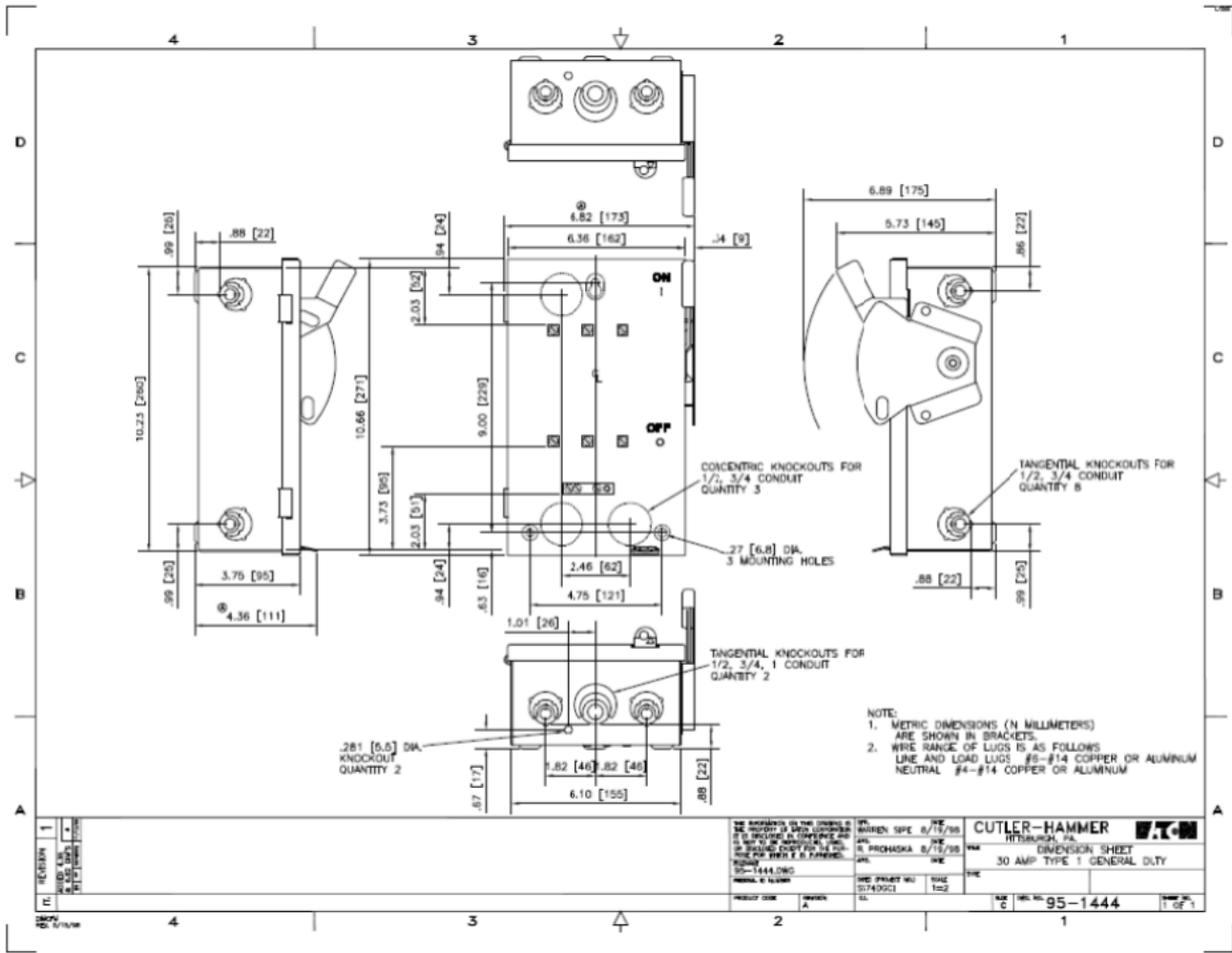
FirstLine:	FirePump
SecondLine:	DisconnectingMeans

Safety Switch Catalog No.

DG221NGBLORED

<p>The information on this document is created by Eaton Corporation. It is disclosed in confidence and it is only to be used for the purpose in which it is supplied.</p>	PREPARED BY	DATE			
		6/28/2016			
	APPROVED BY	DATE	JOB NAME	SAFETY SWITCHES	
		DESIGNATION			
	VERSION	TYPE		DRAWING TYPE	
	1.0.0.1	Safety Switch General Information		Customer Appr.	
NEG-ALT Number	REVISION	DWG SIZE	G.O.	ITEM	SHEET
F4860929X5K3-0000	0	A			1 of 1

ETN



REV	DATE	BY	CHKD
1			

THE DIMENSIONS ON THIS DRAWING ARE THE PROPERTY OF CUTLER-HAMMER. NO PART OF THIS DRAWING IS TO BE REPRODUCED OR TRANSMITTED IN ANY FORM OR BY ANY MEANS, ELECTRONIC OR MECHANICAL, INCLUDING PHOTOCOPYING, RECORDING, OR BY ANY INFORMATION STORAGE AND RETRIEVAL SYSTEM, WITHOUT THE WRITTEN PERMISSION OF CUTLER-HAMMER.	DATE: 8/15/98 BY: J. PROCHASKA CHKD: J. PROCHASKA TITLE: PROJECT MGR NO: 95-1444-010 REV: 01	CUTLER-HAMMER HITACHI, LTD. DIMENSION SHEET 30 AMP TYPE 1 GENERAL DUTY	ETN
PROJECT CODE: 95-1444-010 DRAWING NO: 01740001	DATE: 8/15/98 BY: J. PROCHASKA CHKD: J. PROCHASKA	SHEET NO: 6 OF 6	PART NO: 95-1444 OF 1